

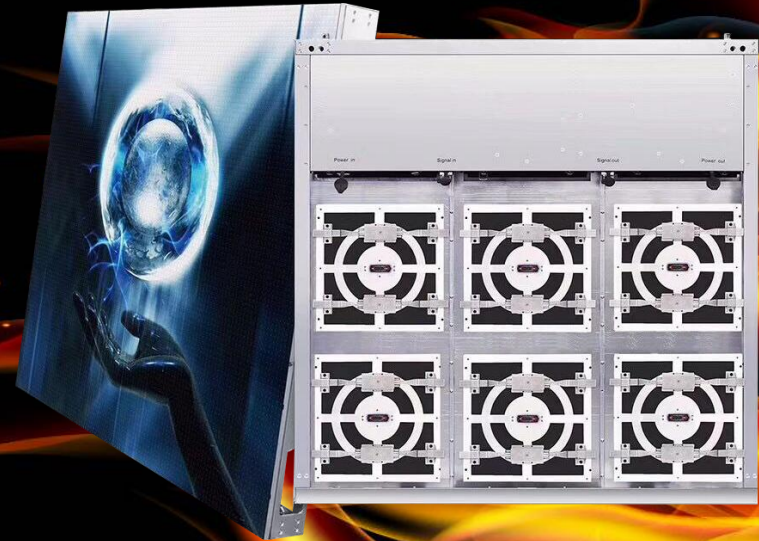


Front Service Outdoor Led Display

1 Outdoor Full Color Fixed Installation series

2 IP67 Outdoor Protection Grade

3 Front Maintenance



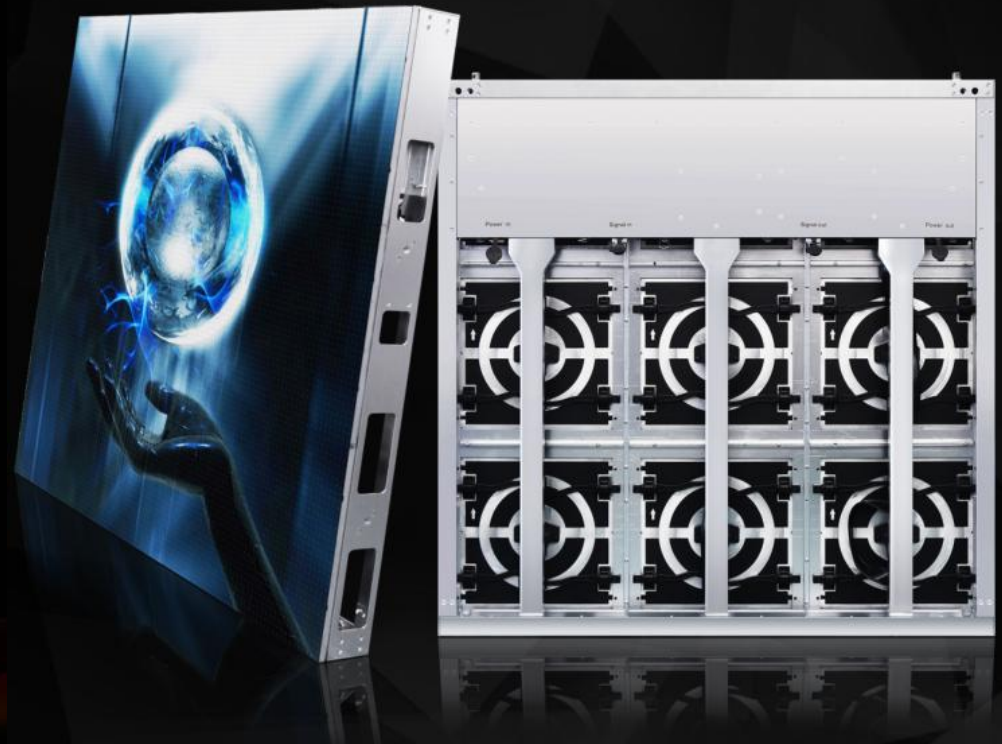


Front Service Outdoor Led Display

This series is a high-protection product designed to meet outdoor front maintenance led display requirement. Very light weight and slim design cabinet, fully front service , which can save much installation space. It is generally used in commercial centre, airport terminal, mall entrance etc.

Parameters

Model:	P6.67 outdoor	P8 outdoor	P10 outdoor
Pixel pitch	6.67mm	8mm	10mm
LED Type	Nationstar SMD2727 Led	Nationstar SMD2727 Led	Nationstar SMD2727 Led
Scan Style	1/6 scan	1/5 scan	1/2 scan
Resolution	22,500 pixels/sqm.	15,625 pixels/sqm.	10,000 pixels/sqm.
Module size(mm)	320mm*320mm	320mm*320mm	320mm*320mm
Module resoluton	48 pixels x 48 pixels	40 pixels x 40 pixels	32 pixels x 32 pixels
Cabinet Size(mm)	960mm W*960mm H*125mm D	960mm W*960mm H*125mm D	960mm W*960mm H*125mm D
Cabinet resoluton	144 pixels x 144 pixels	120 pixels x 120 pixels	96 pixels x 96 pixels
Refresh rate	≥1920 Hz/s	≥1920 Hz/s	≥1920 Hz/s
Driver IC	SUM 2017T	SUM 2017T	SUM 2017T
Brightness	≥ 5500 Nits	≥ 5000 Nits	≥ 6500 Nits
Best viewing distance	≥6m	≥8m	≥10m
Cabinet material	Iron cabinet (37 KG / pc) or aluminum cabinet (25 KG / pc)		
Operating temperature	-30℃----+60℃		
Operating humidity	10%---%95RH		



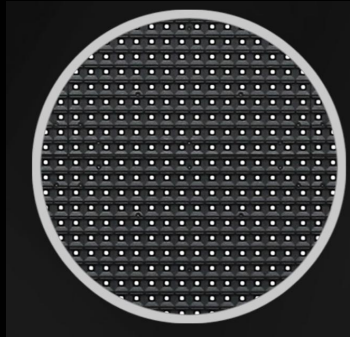
LED Cabinet

Regular size 960mm W x 960mm H

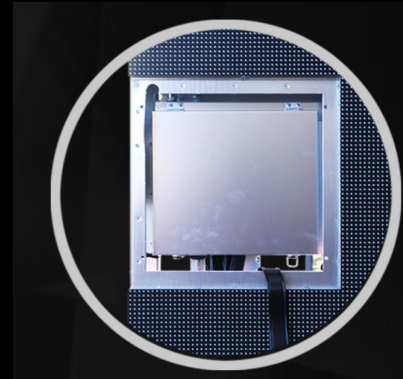
Cabinet Details (IP67 waterproof)



Aluminum / Iron Cabinet



SMD 3 in 1 Led



Modules with front maintenance



Galvanized lock



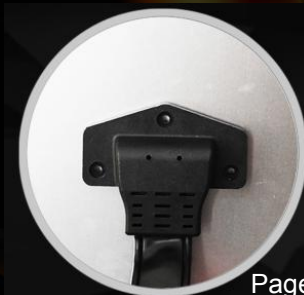
Standard cabinet size 960 x 960mm



Power supply with front maintenance



Cabinet supporting column



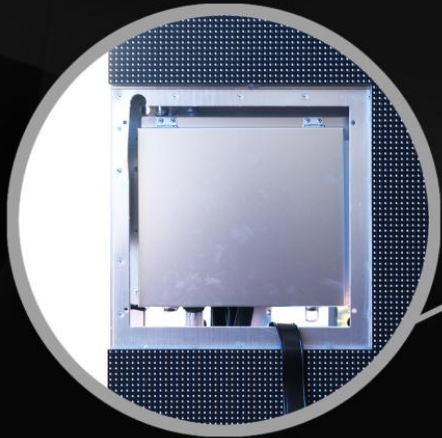
Waterproof Plug



Waterproof Wire

LED Cabinet Details (IP67 waterproof)

Scientific Structure, Professional Construct
Superb Craftsmanship, Exquisite Appearance

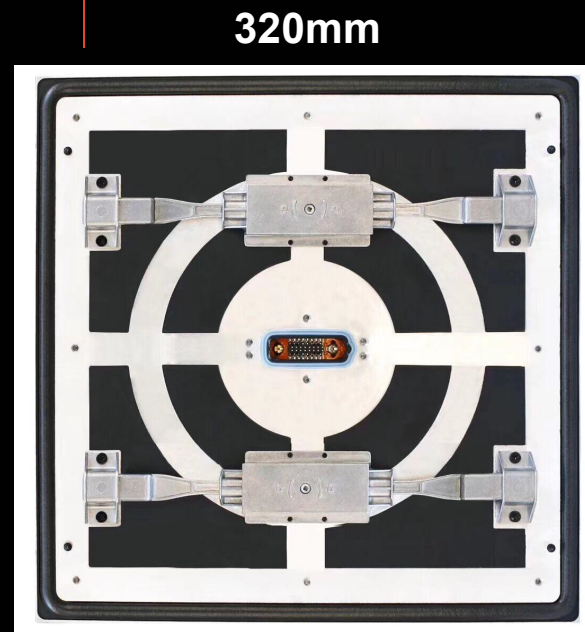
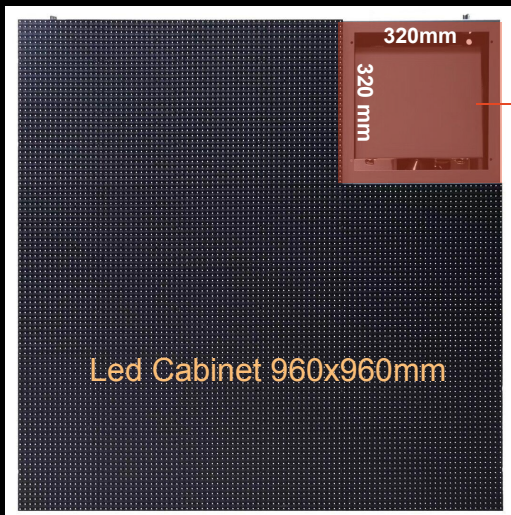


Front-maintenance, fast installation
Easy maintenance
Space saving, Better visual enjoyment

Perfect match of LED modules and cabinets, Much Stronger
The error between Cabinets $\leq 0.5\text{mm}$



Front Maintenance power supply
concise and reasonable wiring
Easy to install and maintain



LED Module

Each Module Size 320mm x 320mm

Waterproof Module 320x320mm

Aluminum base cover modules has the features of high temperature resistance, anti-corrosion, and full waterproof with strong structure. Compared with normal materials, aluminum module is much lighter and stronger under the same specification. ENBON aluminum module's weight only 1.5 KG, module protection grade up to IP68.



Flame Retardant Module 320x320mm

High temperature resistance, corrosion resistance, waterproof with digitization
comprehensive inspection of hidden dangers of electrical insulation aging
leakage, ignition, and overload of electric lines



700 degree high temperature fire protection,
high standard fire retardant

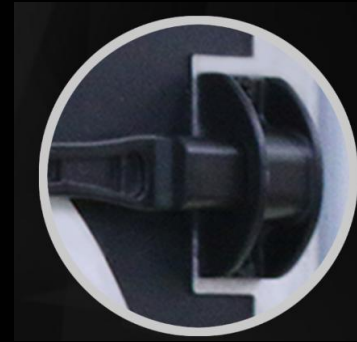
Module Details (320x320mm)



High standard technology



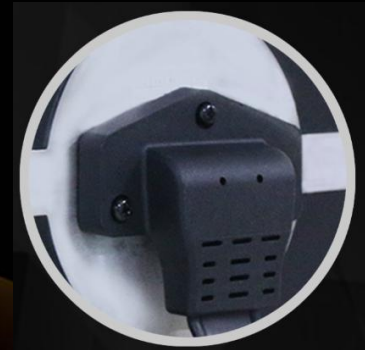
Galvanized lock cover



Galvanized lock



Galvanized lock



Waterproof Plug



Waterproof rubber ring



Waterproof Wire

Led Module with aluminum base cover creat best viewing effect, improve energy-saving effect and the protective effect. much lighter and more convenient for front maintenance.

Compared to aluminum Base Cover, normal plastic base cover don't have fully painting perfect protection. There is no exquisite craft polishing of the plastic base cover in the manufacturing process.

Aluminum Base Cover



Plastic Base Cover



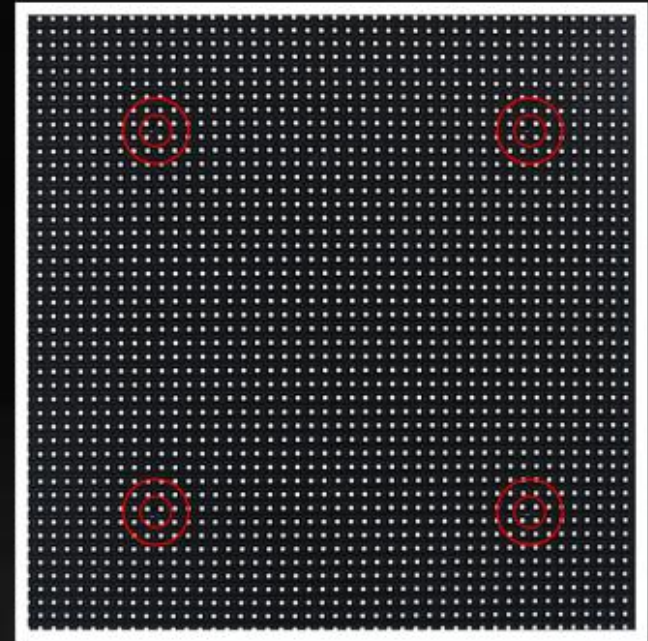
Module Distinction

Plastic Base Cover is without waterproof rubber ring, only with cabinet can achieve waterproof effect. Aluminum Base Cover Module is equipped with waterproof rubber ring, perfect waterproof effect can be achieved even without cabinet.

Quick Module Maintenance



New Design: Nice looking with two locks for front and rear maintenance



Regular product: four locks for maintenance

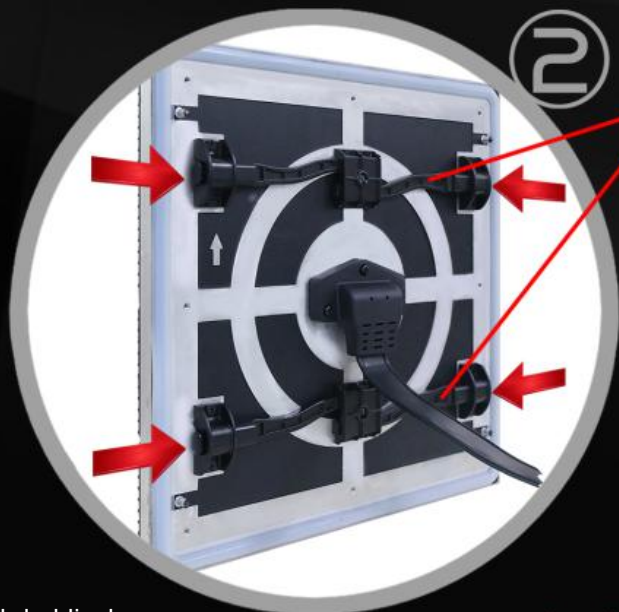
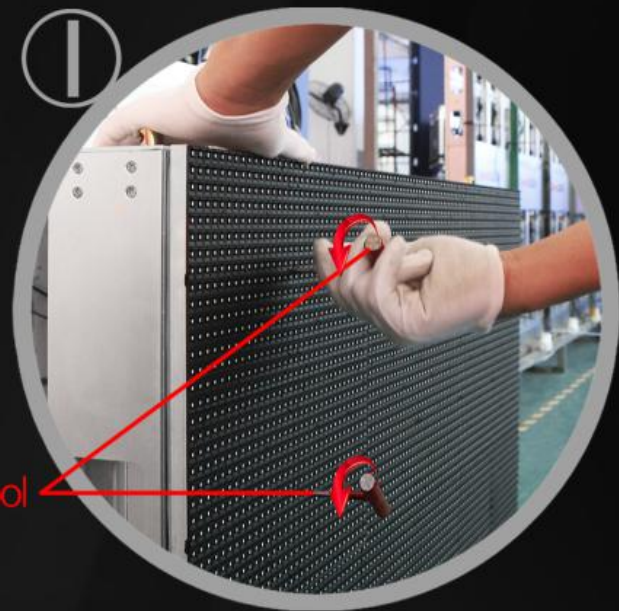
With modular design , modules can be front maintained with fast locks, even non-professional workers can install easily

Easy Front Maintenance

Insert the upper and lower unlock-tools into the specific holes and rotate them to the left. The Lock loose



Unlock tool



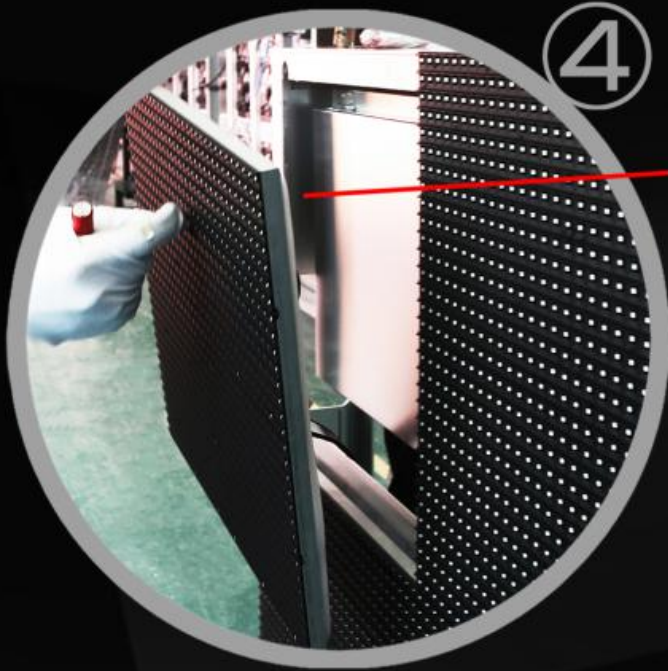
Movable bolt Fixed combination

Unlocking the back module plug with the unlocking tools will separate the LED Module and the Cabinet.

Locking structure, can be lifted



With a little effort, you can separate the module from the Cabinet. Since the error between the modules is only $\leq 0.5\text{mm}$, the module is easily taken down.



The power box is behind the module which can be maintained and replaced at the same time to avoid complicated operations.



Make Back Plug loosen, it can be taken off completely. Easy and quick

More Details please contact us.



THANKS